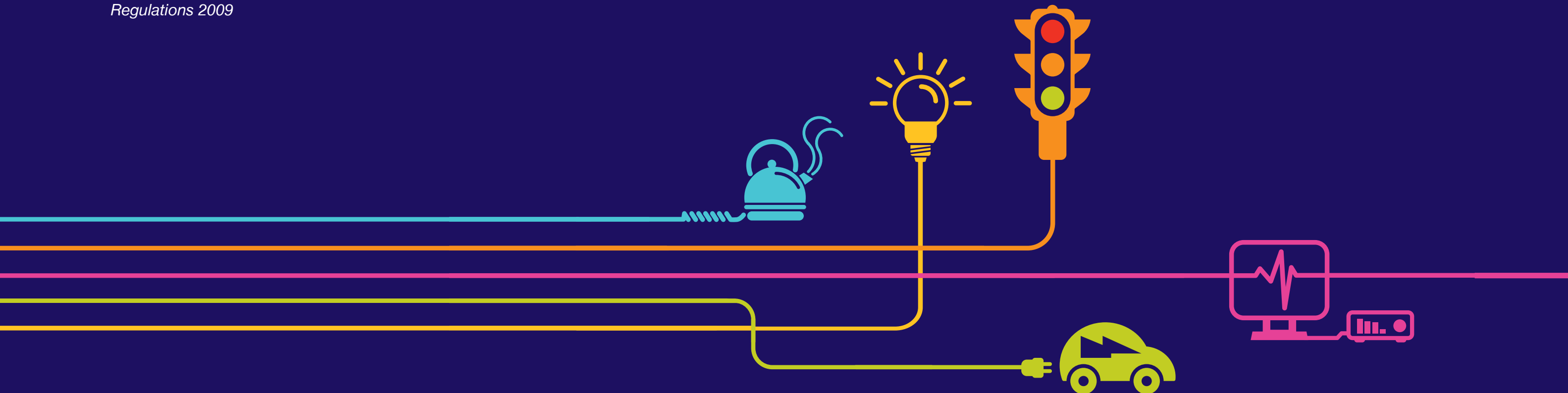


Environmental Statement
Ecology Survey Update Report Figures
Issue B
Figure 8.48

Hinkley Point C Connection Project

*Regulation 5(2)(a) of the Infrastructure Planning
(Applications: Prescribed Forms and Procedure)
Regulations 2009*



Environmental Statement

Hinkley Point C Connection Project

5.28.3. – Ecology Survey Update Report - Figures

Figure	Title
Volume 5.28.3.1.1	
8.17	Breeding Bird Survey Visits 1 and 2 (2010 - 2014) – Issue B
8.18	Breeding Birds Visits 1 and 2 (2012 and 2014) – Species Diversity Scale – Issue B
8.19	Breeding Birds Visits 1 and 2 (2012 and 2014) – Conservations Species Scale – Issue B
Volume 5.28.3.1.2	
8.28	Bat Roost Desk Study Data & Assessment of Trees – Issue B
Volume 5.28.3.1.3	
8.46	Water Vole Desk Study & Survey Data – Issue B
8.47	Otter Desk Study & Survey Data– Issue B
Volume 5.28.3.1.4	
8.48	CONFIDENTIAL Badger Desk Study & Survey Data– Issue B
Volume 5.28.3.1.5	
8.50	GCN Habitat Suitability Index – Issue B
8.51	Amphibian Desk Study & Survey Results – Issue B
8.52	GCN Population Survey Results – Issue B
Volume 5.28.3.2.1	
28.1	Breeding Bird Survey Visits 1 and 2 - 2014 Update Only
28.2	Breeding Birds Visits 1 and 2 – Species Diversity Scale – 2014 Update Only
28.3	Breeding Birds Visits 1 and 2 Conservations Species Scale – 2014 Update Only
28.4	Bat Roost Desk Study Data & Assessment of Trees – 2014 Update Only
Volume 5.28.3.2.2	
28.5	Water Vole Desk Study & Survey Data – 2014 Update Only
28.6	CONFIDENTIAL Badger Desk Study & Survey Data – 2014 Update Only
Volume 5.28.3.2.3	
28.7	GCN Habitat Suitability Index – 2014 Update Only
Volume 5.28.3.2.4	
28.8	GCN Population Survey Results- 2014 Update Only
28.9	Amphibian Desk Study & Survey Results – 2014 Update Only

Figure 8.48 - CONFIDENTIAL Badger Desk Study & Survey Data– Issue B

(Not provided - please contact Simon Pepper at National Grid to discuss obtaining a copy: National Grid House, Warwick Technology Park, Warwick, CV34 6DA)